



Rev 1

04NOV2015



SMA OneTouch ICS

Environmental Monitoring System

REMOTE MONITORING GUIDE



vai

Veltek Associates, Inc.
15 Lee Boulevard
Malvern, PA 19355-1234 USA

Copyright © 2015, Veltek Associates, Inc. All rights reserved



SMA ONETOUCH ICS WARRANTY

Veltek Associates, Inc. warrants all equipment manufactured by Veltek Associates, Inc. and bearing its name to be free from defects in material and workmanship on the date of sale by an authorized Veltek Associates, Inc. distributor to the original purchaser for use. With the exception of any special, extended, or limited warranty published by Veltek Associates, Inc., Veltek Associates, Inc. will, for a period of twelve months from the date of sale, repair or replace any part of the equipment determined by Veltek Associates, Inc. to be defective. This warranty applies only when the equipment is installed, operated, and maintained in accordance with Veltek Associates, Inc.'s written recommendations.

This warranty does not cover, and Veltek Associates, Inc. shall not be liable for general wear and tear, or any malfunction, damage, or wear caused by faulty installation, misapplication, abrasion, corrosion, inadequate or improper maintenance, negligence, accident, tampering, or substitution of non-Veltek Associates, Inc. component parts. Nor shall Veltek Associates, Inc. be liable for malfunction, damage, or wear caused by the incompatibility of Veltek Associates, Inc. equipment with structures, accessories, equipment, or materials not supplied by Veltek Associates, Inc., or the improper design, manufacture, installation, operation or maintenance of structures, accessories, equipment or materials not supplied by Veltek Associates, Inc.

This warranty is conditioned upon the prepaid return of the equipment claimed to be defective to an authorized Veltek Associates, Inc. distributor for verification of the claimed defect. If the claimed defect is verified, Veltek Associates, Inc. will repair or replace free of charge any defective parts. The equipment will be returned to the original purchaser transportation prepaid. If inspection of the equipment does not disclose any defect in material or workmanship, repairs will be made at a reasonable charge, which charges may include the costs of parts, labor, and transportation.

THIS WARRANTY IS EXCLUSIVE, AND IS IN LIEU OF ANY OTHER WARRANTIES, EXPRESS OR IMPLIED, INCLUDING BUT NOT LIMITED TO WARRANTY OF MERCHANTABILITY OR WARRANTY OF FITNESS FOR A PARTICULAR PURPOSE.

Veltek Associates, Inc.'s sole obligation and buyer's sole remedy for any breach of warranty shall be as set forth above. The buyer agrees that no other remedy (including, but not limited to, incidental or consequential damages for lost profits, lost sales, injury to person or property, or any other incidental or consequential loss) shall be available. Any action for breach of warranty must be brought within two (2) years of the date of sale.

Veltek Associates, Inc. makes no warranty, and disclaims all implied warranties of merchantability and fitness for a particular purpose in connection with accessories, equipment, materials or components sold but not manufactured by Veltek Associates, Inc. These items sold, but not manufactured by Veltek Associates, Inc. (such as electric motors, switches, hose, etc.), are subject to the warranty, if any, of their manufacturer. Veltek Associates, Inc. will provide purchaser with reasonable assistance in making any claim for breach of these warranties.

In no event will Veltek Associates, Inc. be liable for indirect, incidental, special, or consequential damages resulting from Veltek Associates, Inc. supplying equipment hereunder, or the furnishing, performance, or use of any products or other goods sold hereto, whether due to a breach of contract, breach of warranty, the negligence of Veltek Associates, Inc., or otherwise.

TABLE OF CONTENTS

1.	REMOTE CONNECTIVITY OPTIONS	4
2.	REMOTE VIEW/CONTROL OF THE INTERFACE.....	4
	Monitor and Control Interface (SMA-ICS-ACCESS-REM).....	4
	Connect to a SMA OneTouch ICS Interface from a Windows Device	5
3.	REMOTE MONITORING/CONTROL OF THE CONTROLLER	6
	Monitor and Control (SMA-ICS-ACCESS-CONTR)	6
	Monitor Only (SMA-ICS-ACCESS-MON)	6
	Controller Specifications	7
	Parameters Available For Control	7
	Parameters Available For Monitoring	8

1. REMOTE CONNECTIVITY OPTIONS

The SMA OneTouch Integrated Command System (ICS) is a networked system that may be remotely accessed by operators and administrators. This is an optional feature and must be purchased separately. The system features two main remote connectivity options:



Remote View and Control of the Interface via VNC Client



Remote Monitoring and Control of the Controller Data via SCADA, DCS, or Other PC Based System

2. REMOTE VIEW/CONTROL OF THE INTERFACE

Monitor and Control Interface (SMA-ICS-ACCESS-REM)



This option allows virtually any desktop computer, laptop computer, tablet, or smartphone to view and control the SMA OneTouch ICS Interface. A free, virtual network computing (VNC) client connects the device(s) to the Interface. The VNC client essential creates a remote-desktop connection with the Interface, allowing the user to view and interact with the Interface software.

For more information see, “Connect to a SMA OneTouch ICS Interface from a Windows Device” on page 5.

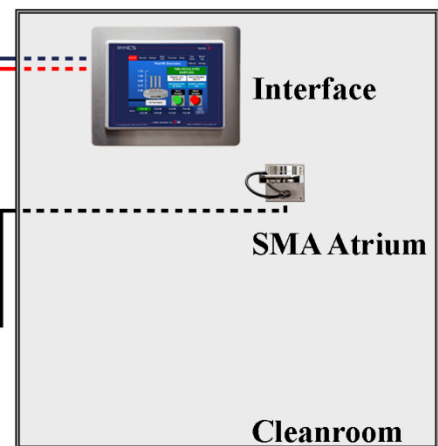
Monitor/Control Interface



Integrated Controller/Flow Center

Pump Contactor

Vacuum Pump



Key

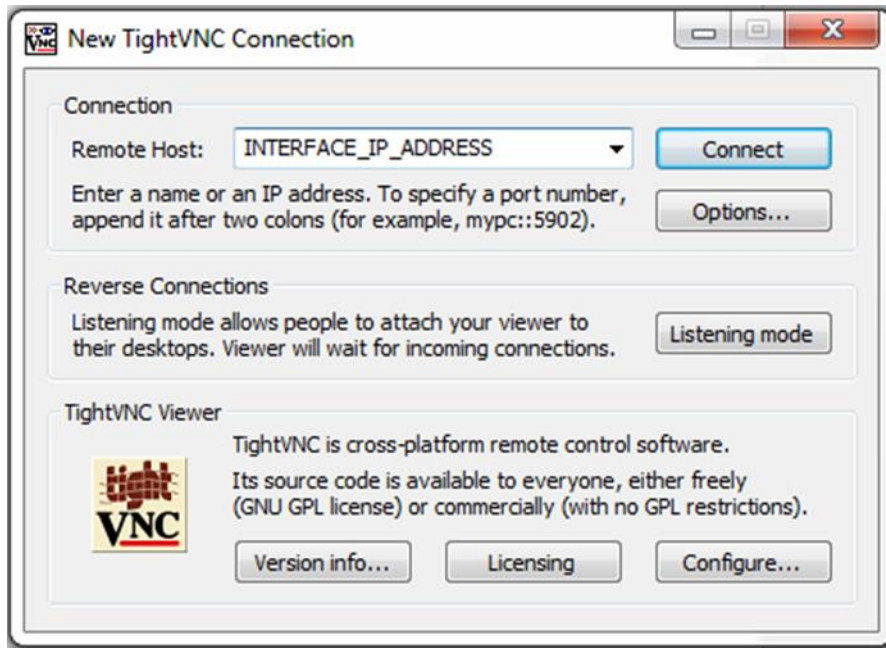
- 24 VDC Power
- Cat 5e Networking Cable
- Vacuum Tubing
- 24 VDC Control
- Vacuum Pump Power

Connect Controller and Contactor to customer supplied power

Connect to a SMA OneTouch ICS Interface from a Windows Device



1. Install TightVNC Viewer from <http://www.tightvnc.com/download.php>.
2. Launch the TightVNC Viewer application.



3. Replace “INTEFACE_IP_ADDRESS” with the Interface’s network address (see turnover documentation for address).
4. If prompted for a password, enter it in the dialog box (see turnover documentation for password).
5. View and control the SMA OneTouch ICS interface using the TightVNC Viewer as you would control the Interface locally.

3. REMOTE MONITORING/CONTROL OF THE CONTROLLER

Monitor and Control (SMA-ICS-ACCESS-CONTR)



This option allows a remote system (by others) to monitor (statuses, parameters, alarms, etc.) and control SMA OneTouch ICS (issue sampling commands, toggle modes, etc.) through a network connection. Typically, a remote system will be desktop PC or server-based application running Supervisory Control and Data Acquisition (SCADA) or plant monitoring system (PMS). Remote programmable-logic controllers (PLC) may also issue commands to the system.

Monitor Only (SMA-ICS-ACCESS-MON)



This option allows a remote system (by others) to monitor SMA OneTouch ICS data (statuses, parameters, alarms, etc.) through a network connection. Typically, a remote system will be desktop PC or server-based application running Supervisory Control and Data Acquisition (SCADA) or plant monitoring system (PMS). Remote programmable-logic controllers (PLC) may also monitor the system.

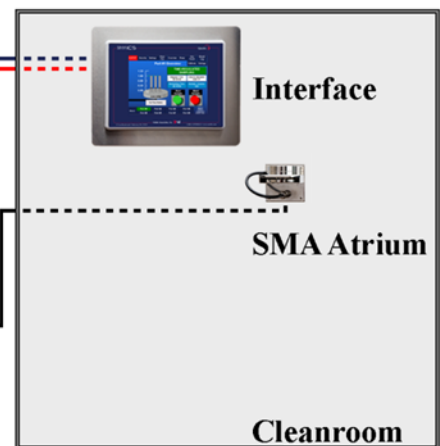
For more information see:

- “Controller Specifications” on page 7.
- "Parameters Available For Control” on page 7.
- “Parameters Available For Monitoring” on page 8.

**Monitor/Control Controller
or
Monitor Only**



**Integrated Controller/Flow Center
Pump Contactor
Vacuum Pump**



Key

- 24 VDC Power
- Cat 5e Networking Cable
- Vacuum Tubing
- 24 VDC Control
- Vacuum Pump Power

Connect Controller and Contactor
to customer supplied power

Controller Specifications



Programmable Logic Controller Specifications	
Manufacturer	Allen-Bradley
Equipment Name	CompactLogix
Part Number	1769-L18ER-BB1B
Specification	CompactLogix 5370 L1 Programmable Automation Controllers
Manual	CompactLogix 53700 Controllers
Communication	Common Industrial Protocol (CIP) over Ethernet/IP
Software Version	v24.00

Parameters Available For Control



Port Control Functions

- Initiate sampling
- Confirm sampling complete
- Abort sampling
- Confirm sampling aborted

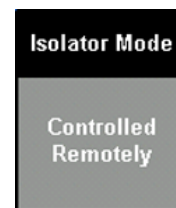
System Control Functions

- Reset all alarms
- Emergency stop (all ports)

Isolator Control Functions

- Initiate sampling/Iso
- Confirm sampling complete/Iso
- Abort sampling/Iso
- Toggle port to Isolator Mode

If Remote Control is enabled, on the ICS Interface **Port Settings** screen the **Isolator Mode** switch is disabled and displays **Controlled Remotely**.



Parameters Available For Monitoring



Port Parameters

- Status
 - Sampling inactive
 - Sampling (time or volume regulated)
 - Sampling complete
 - Sampling aborted
 - Alarm active (sampling active)
 - Alarm occurred (sampling inactive)
- Flow rate (CFM)
- Sampled volume (active sample, CF)
- Sampled volume remaining (if applicable, CF)
- Sample time elapsed (min.)
- Sample time remaining (if applicable, min.)
- Delaying process
- Port disabled

System Parameters

- Pump status
 - Inactive
 - Running
 - Alarm
- Pump runtime (current)
- Controller date and time
- E-Stop status

Isolator Parameters

- Port in Isolator Mode
- Isolator Mode inactive
- Delaying (if applicable)
- Isolator Mode active
- Isolator Mode active with remaining time (if applicable)
- Isolator Mode complete

**For Sales and Service
Please contact:**



Veltek Associates, Inc.

15 Lee Boulevard
Malvern, PA 19355
610-644-8335 Main
610-644-8336 Fax
1-888-4-STERILE

Or visit us on the web at www.sterile.com

Document file name: SMA_OneTouch_ICs_Remote_Monitoring_Guide_Rev1

Revision: Rev1

Date: 04NOV2015