

# AEROTRAK+ REMOTE AIRBORNE PARTICLE COUNTERS WITH PUMP 6000 SERIES

AeroTrak<sup>®</sup>+ Remote Airborne Particle Counters (APCs) with Pump are ideal for installation in locations that do not have external vacuum systems, typical to but not limited to electronics, semiconductor, and industrial facilities. They reduce installation complexity and costs—without worry of data interruption or potential data loss—using internal vacuum pumps and long range wireless communication in facilities with limited infrastructure. AeroTrak+ Remote APCs with Pump are designed to be easily relocated as manufacturing layouts change or facilities redistribute resources or move locations.



UNMATCHED 5 YEAR LASER WARRANTY

## Features & Benefits

- + Reliable laser technology backed by the industry's longest warranty (five years)
- + Secure, long-term collection and storage of critical manufacturing data
- + Long range wireless enabled with minimal infrastructure using LoRaWAN architecture and built-in pump—reducing installation costs and complexity
- + Identifies industry's widest range of particle sizes by way of available model options
- + Ethernet or DC power options available
- + Early-warning of adverse environmental trends with second-by-second monitoring
- + Reliable operation with heavy industrial electrical immunity compliance
- + Predictive instrument maintenance alerts
- + Rapid setup and unit configuration using standard USB-C cable
- + ISO 14644-14 suitability for use classified
- + Sealed inlet prevents accidental ingress of cleaning solutions
- + Advanced FMS driver auto discovers sensors reducing integration time

## CHOOSE THE RIGHT MODEL FOR YOUR NEEDS

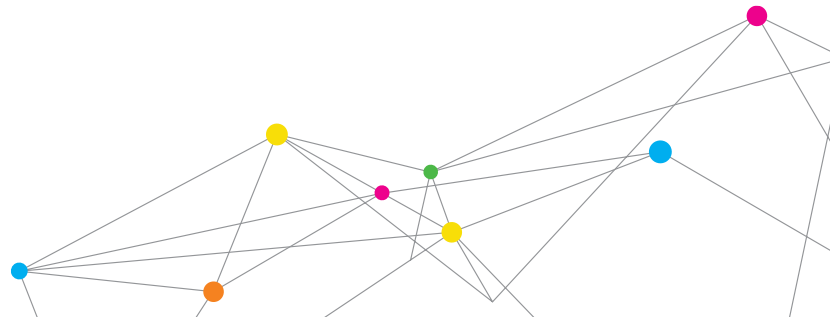
MODEL	FLOW RATE	CHANNEL SIZE OPTIONS	RECOMMENDED MANUFACTURING APPLICATION
6201	0.1 CFM (2.83 LPM)	0.2, 0.3 $\mu\text{m}$ 0.2, 0.3, 0.5, 1.0 $\mu\text{m}$	Semiconductor
6301	0.1 CFM (2.83 LPM)	0.3, 0.5, 1.0, 5.0 $\mu\text{m}$ 0.3, 0.5, 5.0, 10.0 $\mu\text{m}$ 0.3, 0.5, 1.0, 5.0, 10.0, 25.0 $\mu\text{m}$	Semiconductor, Electronics, Aerospace, Optics, Automotive, Clean Manufacturing
6501	0.1 CFM (2.83 LPM)	0.5, 1.0, 5.0, 10.0 $\mu\text{m}$ 0.5, 5.0, 10.0, 25.0 $\mu\text{m}$ 0.5, 1.0, 5.0, 10.0, 25.0 $\mu\text{m}$	Semiconductor, Electronics, Aerospace, Optics, Automotive, Clean Manufacturing

## HAVE AN EXTERNAL VACUUM SYSTEM?

Check out AeroTrak+ Remote APCs—designed for use in facilities with external vacuum systems, typical to but not limited to electronics, semiconductor, and industrial facilities.



UNDERSTANDING, ACCELERATED



# SPECIFICATIONS

## AEROTRAK+ REMOTE AIRBORNE PARTICLE COUNTERS 6000 SERIES

### SPECIFIC MODEL SPECIFICATIONS

	6201	6301	6501
Size Resolution	<15% @ 0.3 μm (per ISO 21501-4)	<15% @ 0.5 μm (per ISO 21501-4)	
Counting Efficiency	50% at 0.2 μm; 100% for particles >0.3 μm (per ISO 21501-4 and JIS)	50% at 0.3 μm; 100% for particles >0.45 μm (per ISO 21501-4 and JIS)	50% at 0.5 μm; 100% for particles >0.75 μm (per ISO 21501-4 and JIS)

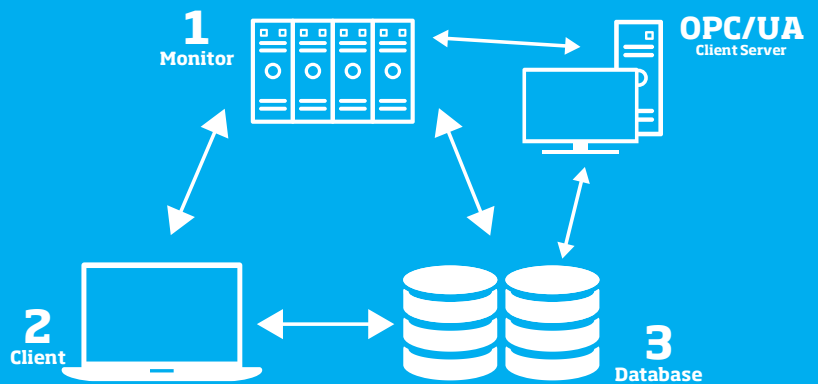
### FOR ALL MODELS

<b>Concentration Limit</b>	4,860,000 particles/ft <sup>3</sup> (172,000,000/m <sup>3</sup> ) @ 10% coincidence loss
<b>Light Source</b>	Laser Diode
<b>Laser Warranty</b>	Five Years
<b>Instrument Warranty</b>	Two Years
<b>Calibration Frequency</b>	One Year
<b>Vacuum Source</b>	Carbon Vane Pump, auto stops if flow blockage detected due inlet capping
<b>Communication</b>	Ethernet (TCP/IP) Modbus RTU
<b>Wireless Option</b>	LoRaWAN
<b>External Surface</b>	Stainless steel
<b>Analog Output Options</b>	3 Channels 4-20 mA output: 2 User selectable particle sizes-linear or log scale 1 Status channel
<b>Standards</b>	CE, JIS B9921, ISO 21501-4
<b>Operating Range</b>	50° to 104°F (10° to 40°C) / 20% to 95% noncondensing
<b>Zero Count</b>	<1 count / 5 minutes (<2 particles / ft <sup>3</sup> ) (per ISO 21501-4 and JIS)
<b>Sound Pressure Level</b>	<50dB @ 1 meter distance - normal running conditions

<b>Sampling Frequency</b>	1 second to 24 hours Standard sample period data collection plus parallel per second sampling to detect adverse trends
<b>Status Indicator</b>	Power, service, sampling and Ethernet
<b>Alarm Output</b>	Normal open dry contact rated 0 to 60 V AC/DC 1 Amp
<b>Data Storage</b>	250,000 sample records, 15 minutes of 1 second data
<b>Dimensions (HxWxD)</b>	5.6 in. x 4.5 in. x 2.6 in. (14.2 cm x 11.4 cm x 6.6 cm)
<b>Weight</b>	2.3 lb (1.05 kg)
<b>Power</b>	Power-over-Ethernet (PoE compliant with IEEE 802.3af) or 12-24 VDC
<b>Storage Range</b>	14° to 122°F (-10° to 50°C) / Up to 98% noncondensing
<b>Included Accessories</b>	Operating manual on USB flash drive
<b>Optional Accessories</b>	Power supply, isokinetic inlets, purge filter, sample tubing, vacuum tubing and remote mounting bracket

NO INTERRUPTIONS.  
NO DATA LOSS.  
NO-HASSLE COMPLIANCE.  
Complete facility monitoring systems offered by TSI.

Learn more at [www.tsi.com/reliablesystem](http://www.tsi.com/reliablesystem)



UNDERSTANDING, ACCELERATED

TSI Incorporated - Visit our website [www.tsi.com](http://www.tsi.com) for more information.

<b>USA</b>	<b>Tel:</b> +1 800 874 2811	<b>India</b>	<b>Tel:</b> +91 80 67877200
<b>UK</b>	<b>Tel:</b> +44 149 4 459200	<b>China</b>	<b>Tel:</b> +86 10 8219 7688
<b>France</b>	<b>Tel:</b> +33 1 41 19 21 99	<b>Singapore</b>	<b>Tel:</b> +65 6595 6388
<b>Germany</b>	<b>Tel:</b> +49 241 523030		